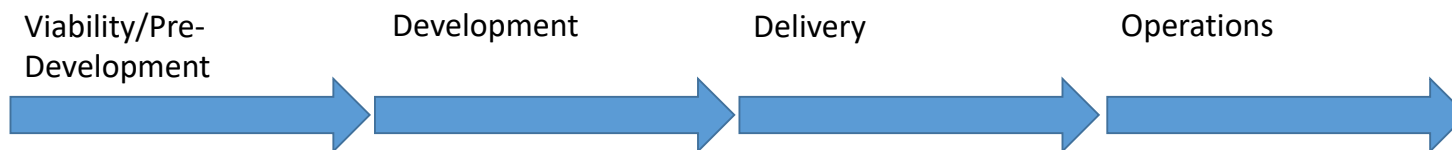


What Does a Heritage Project Look Like?

- A project that involves any type of 'heritage' – wide ranging definition
- Typically involves **capital works** and **activities**; outcomes for both people and heritage – both are important, especially to the National Lottery Heritage Fund
- Typically delivered in Stages:



- Quite often, the first stage (viability) can take the longest, as you get yourself set up, define the project scope, and secure some initial funding.
- Heritage projects involve a range of people, skills and often partners
- Projects come in all shapes and sizes, and can take time to get right

How to develop a project

ALIX SLATER
CONSULTANCY AND TRAINING

1. Not Grants for Places of Worship (GPOW)!
2. Use the Expression of Interest form to scope out the project
3. Use Resilient Heritage Strength Checker to see if you are ready to take on a project <https://www.resilientheritagechecker.org.uk/>
4. Consider a phased approach to build capacity, fundraise and increase chance of success
5. Talk to other heritage sites about their experiences and lessons learnt
6. Visit other churches to help develop a shared vision of what you might do (and what you don't like)
7. How to achieve success

 **LONDON
HISTORIC
BUILDINGS TRUST**

Reawakening St Mary Magdalene: Project aims

- Prevent further damage to the fabric of the building
 - Stop water ingress through South Aisle roof & North Porch
 - High level stone repairs
 - Clean, and conserve windows, leadwork and surrounding stone work
- Ensure the building is fit for purpose
 - Upgrade electrics, heating, lighting, security, fire systems
 - Create new acoustically separate space
 - Improve access, visitor welcome and experience



Project aims

- Be part of Newark's heritage offer, raising awareness of the local, regional and national significance of the church
- Connect with, and engage with our community
- Contribute to heritage skills development
- Create employment / economic benefits
- Minimise the church's carbon footprint through energy efficiency measures and maximise benefits



Activities

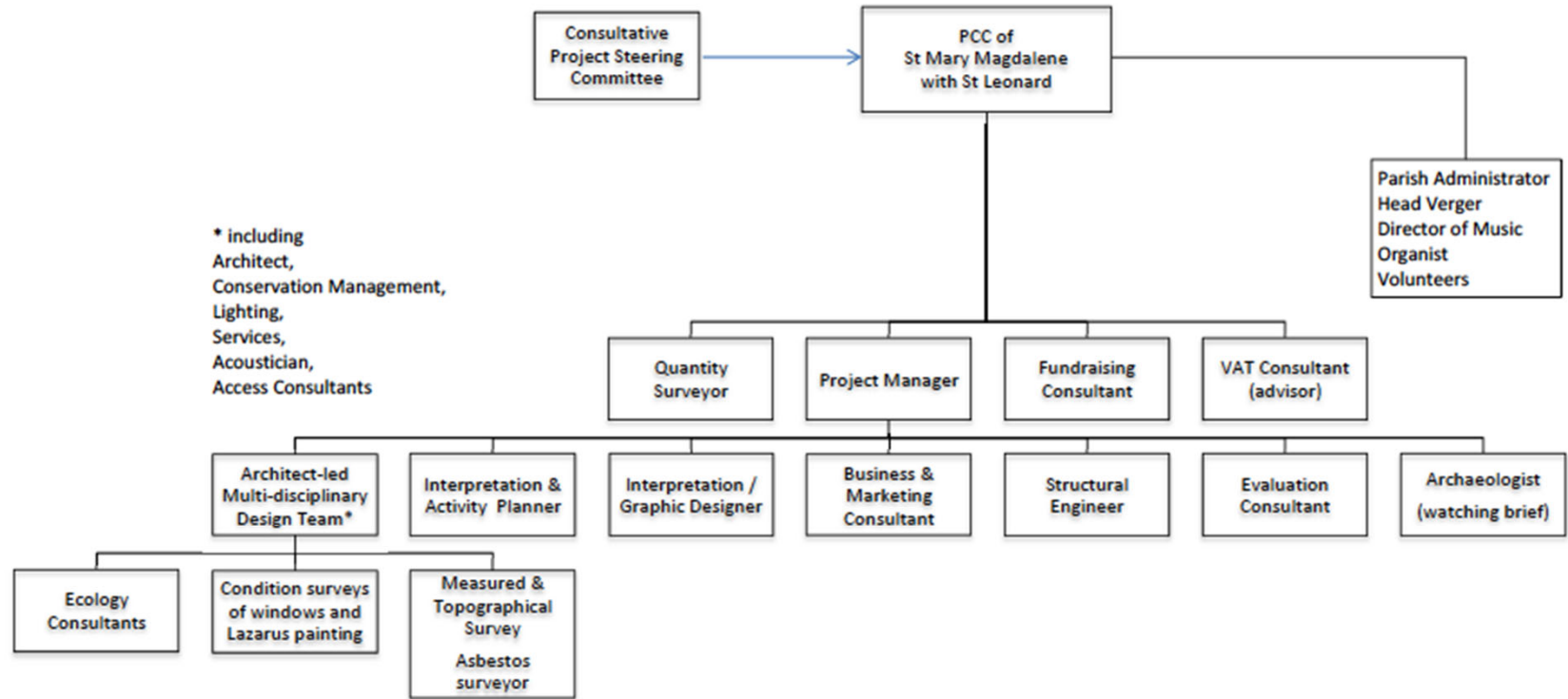
- Storytelling project
 - Individuals stories of the church
 - Stories about key characters
 - Re-enactments of key events, scores created by musicians, filmed by young people, recordings are a legacy
 - Storytelling walks led by volunteers
 - 5 stories told and filmed by young people
 - Tactile story mat or story stacks to engage children
 - Reading challenge during summer holidays
 - Children create stories inspired by the windows
 - Story competition
 - Literacy projects with people who have ESL



Activities

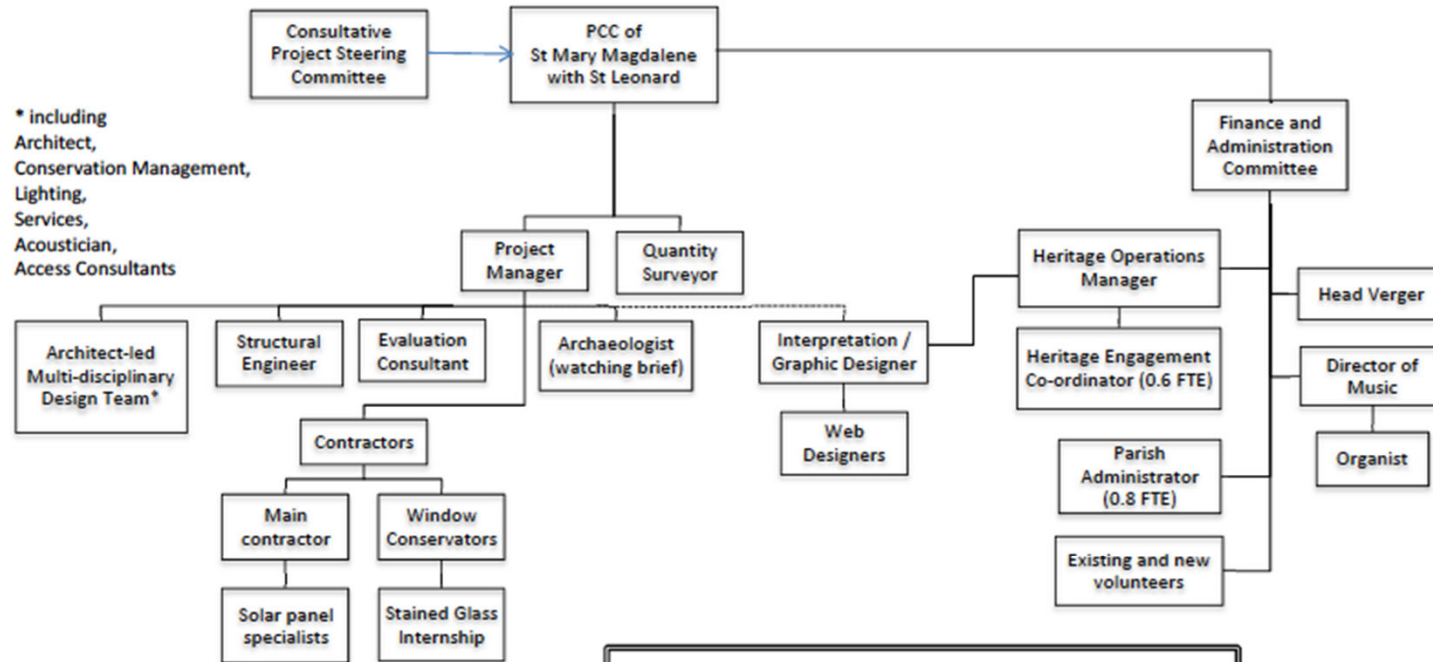
- Stained glass theme
 - Co-created projects with different audiences
 - Reminiscence & craft sessions
- Heritage talks and tours
- Heritage skills focusing on entry level
 - Apprenticeship
 - ICON internship with glass studio
 - 6 week internships
 - work experience
- Range of new volunteer roles & training





Project structure during delivery phase

ALIX SLATER
CONSULTANCY AND TRAINING



The Finance and Administration Committee is a committee of the PCC and accountable to it. It will be responsible for ensuring that each member of paid staff has a designated line manager and that volunteers are also appropriately managed. This committee will also identify and monitor KPIs as described in section 27.2.

LONDON
HISTORIC
BUILDINGS TRUST

Working Lunch: Potential Project Challenges & Opportunities

ALIX SLATER
CONSULTANCY AND TRAINING

1. What is the heritage at your church?
2. What stories do you have to share?
3. What statutory designation does your church have? (Grade I, II, II* listing)
4. Do you have a 'golden thread' or theme that ties your project together?
5. **How can your project make a difference to the heritage, people and your community?**

6. What barriers can you see which you will need to overcome?
 - a) Are these physical barriers?
 - b) Organisational e.g. capacity, financial, knowledge of local needs?
 - c) Attitudes, awareness

 **LONDON
HISTORIC
BUILDINGS TRUST**

Feedback on activity – how might you act on this to develop a project?

ALIX SLATER
CONSULTANCY AND TRAINING

1. Think about who currently engages with the church and how
2. Research who lives in your community and who you aren't serving, but who might be interested in your heritage or using the building
3. Are there gatekeepers who are working with these communities?
4. Who else might be interested in your heritage?
5. List out the barriers you have identified and think about how you might overcome these through this project
6. Go and visit other sites who have delivered projects with similarities to you – can you learn any lessons?

 **LONDON
HISTORIC
BUILDINGS TRUST**